



**Total separation solenoid valve  
2/2 way N.C. with flow regulation  
Direct acting - NSF Certified**

**21D72KRS90-L  
÷  
21D72KRS90-R**

**PRESENTATION:**

Directing acting S.V. for automatic drink dispensers.  
Minimum operational pressure is not required.  
The material used and the tests carried out ensure maximum reliability and duration.

**USE:** Automatic drink dispensers

**PIPES:** Boiler stub connection Ø12 - Ø 11

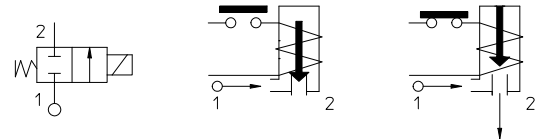
**COILS:**  
8W - Ø 13  
BDA - BDS - BSA 155°C (class F)  
BDF - BDV 180°C (class H)

**MOULDING AND BOBBIN ARE MADE BY 100% VIRGIN MATERIAL.**

Ambient temperature:  
with coil class **F** - 10°C + 60°C  
with coil class **H** - 10°C + 80°C



Gaskets	Temperature		Medium
	+ 2°C	+100°C	
S=VMQ (silicone)			Water



Pipe	Code	Max viscosity		Ø mm	Kv l/mn	Power (watt)	Pressure		
		cSt	°E				min bar	M.O.P.D.	
								AC bar	DC bar
Ø12	21D72KRS90-L	-	-	9	*	8	0	0,3	0,3
	21D72KRS90-M								
Ø11	21D72KRS90-R								

\* FLOW RATE WITH HEAD OF 80 mm = 2,5 l/min.

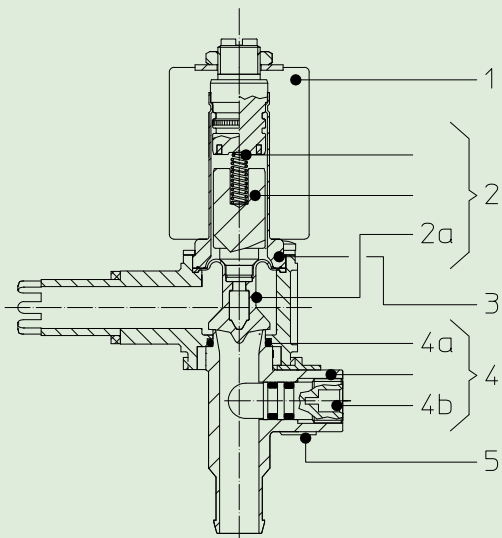
**NSF CERTIFIED**



The "ODE" reserves the right to carry out technical and aesthetic modifications without prior notification.

**MATERIALS:**

- Body** PSU (Polysulphone)
- Lower body** PSU (Polysulphone)
- Lower body clamping device** PA (Polyammide)
- Armature tube** Brass - UNI EN 12164 CW614N
- Fixed core** Stainless steel AISI series 400
- Plunger** Stainless steel AISI series 400
- Phase displacement ring** Copper - Cu 99,9%
- Spring** Stainless steel AISI series 300
- Bellow membrane** Standard: S = VMQ  
On request W = MFQ



**SPARE PARTS:**

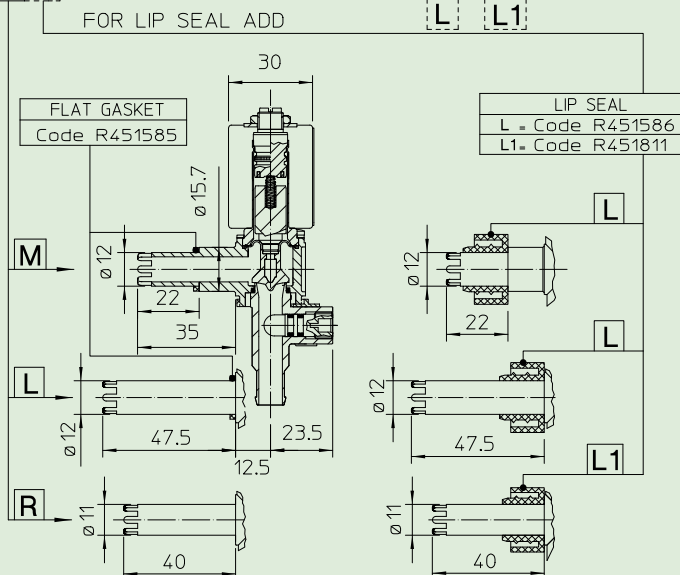
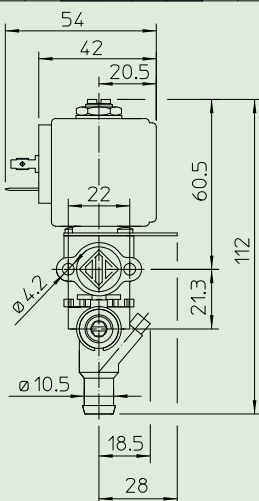
- 1. Coil:** See coils list
- 2. Complete plunger:** Code R452491/S
- 2a. Bellow membrane:** Code R452489/S
- 3. Complete armature tube:** Code R452197
- 4. Lower body assembly:** Code R452492
- 4a. Gasket O-Ring:** Code R990052/S
- 4b. Flow setting screw with O-Rings:** Code R452226
- 5. Lower body clamping device:** Code R452259

**KIT:**  
KR130KRS90-L3=2+3

**DIMENSIONS:**

**SOLENOID VALVE CODING WITH ACCESSORIES**

2 1 D 7 2 K R S 9 0 - M L



COIL TYPE	POTENZA		
	W ---	Hold VA ~	Inrush VA ~
B	8	14,5	25



**Total separation solenoid valve  
2/2 way N.C. with flow regulation  
Direct acting - NSF Certified**

**21D72RRS90-L  
÷  
21D72RRS90-R**

**PRESENTATION:**

Directing acting S.V. for automatic drink dispensers.  
Minimum operational pressure is not required.  
The material used and the tests carried out ensure maximum reliability and duration.

**USE:** Automatic drink dispensers

**PIPES:** Boiler stub connection Ø12 - Ø 11

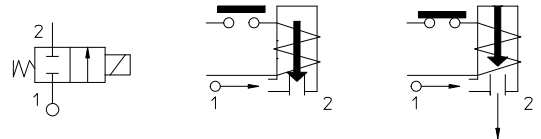
**COILS:** 12W ED 50% - Ø 10  
ICA 155°C (class F)

**MOULDING AND BOBBIN ARE MADE BY 100% VIRGIN MATERIAL.**

Ambient temperature -10°C + 60°C



Gaskets	Temperature		Medium
	+ 2°C	+100°C	
S=VMQ (silicone)			Water



Pipe	Code	Max viscosity		Ø mm	Kv l/mn	Power (watt)	Pressure		
		cSt	°E				min bar	M.O.P.D.	
								AC bar	DC bar
Ø12	21D72RRS90-L	-	-	9	*	12 ED 50%	0	0,3	0,3
	21D72RRS90-M								
Ø11	21D72RRS90-R								

\* FLOW RATE WITH HEAD OF 80 mm = 2,5 l/min.

**NSF CERTIFIED**



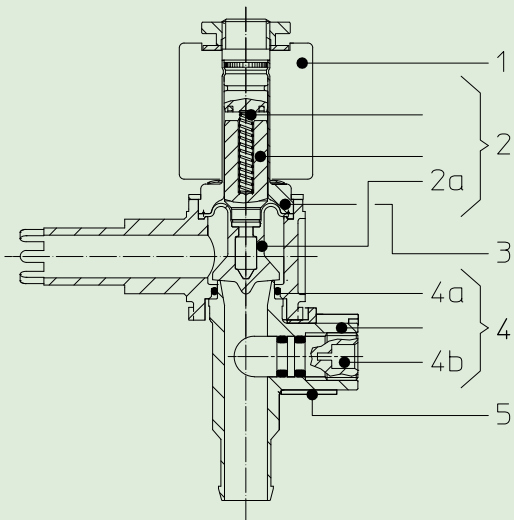
**Note**

Available on request and with minimum quantities

The "ODE" reserves the right to carry out technical and aesthetic modifications without prior notification.

**MATERIALS:**

<b>Body</b>	PSU (Polysulphone)
<b>Lower body</b>	PSU (Polysulphone)
<b>Lower body clamping device</b>	PA (Polyamide)
<b>Armature tube</b>	Brass - UNI EN 12164 CW614N
<b>Fixed core</b>	Stainless steel AISI series 400
<b>Plunger</b>	Stainless steel AISI series 400
<b>Phase displacement ring</b>	Copper - Cu 99,9%
<b>Spring</b>	Stainless steel AISI series 300
<b>Bellow membrane</b>	Standard: S = MVQ On request W = MFQ



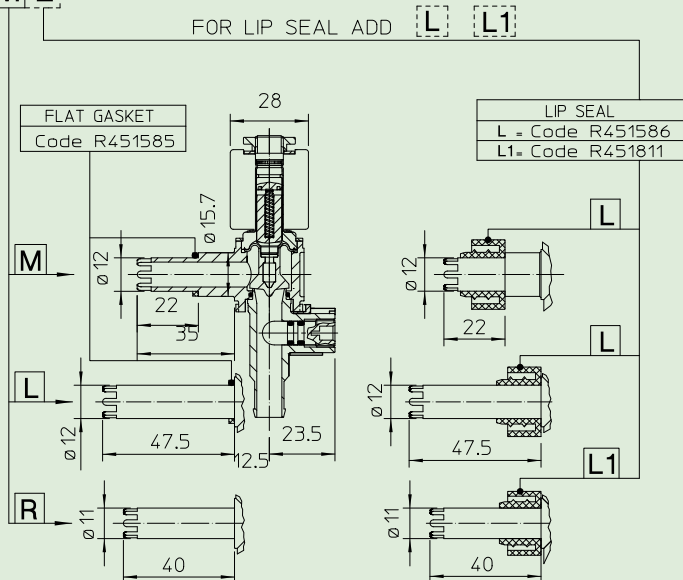
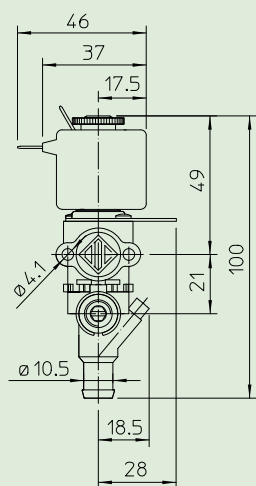
**SPARE PARTS:**

- |   |   |
|---|---|
| <b>1. Coil:</b><br>See coils list                 | <b>4a. Gasket O-Ring:</b><br>Code R990052/S                 |
| <b>2. Complete plunger:</b><br>Code R452501/S     | <b>4b. Flow setting screw with O-Rings:</b><br>Code R452226 |
| <b>2a. Bellow membrane:</b><br>Code R452489/S     | <b>5. Lower body clamping device:</b><br>Code R452259       |
| <b>3. Complete armature tube:</b><br>Code R452241 | <b>KIT:</b><br>KR100KRS90-L2=2+3                            |
| <b>4. Lower body assembly:</b><br>Code R452492    |   |

**DIMENSIONS:**

**SOLENOID VALVE CODING WITH ACCESSORIES**

21D72RRS90 - ML



COIL TYPE	POWER ABSORPTION		
	W ==	Hold VA ~	Inrush VA ~
I	12	22	30



**Total separation solenoid valve  
2/2 way N.C. with flow regulation  
Direct acting - NSF Certified**

21K72KRS90-000

÷

26K72KRS90-000

**PRESENTATION:**

Bank S.V. for automatic drink dispensers.  
Minimum operational pressure is not required.  
The materials used and the tests carried out ensure maximum reliability and duration.

**USE:** Automatic drink dispensers

**PIPES:** Please turn over (A-B-D-I-L-R)

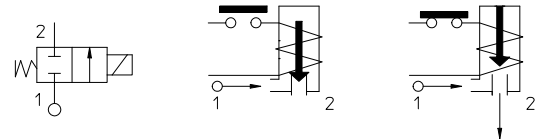
**COIL:** 8W - Ø 13  
BDA - BDS - BSA 155°C (class F)  
BDF 180°C (class H)

**MOULDING AND BOBBIN ARE MADE BY 100% VIRGIN MATERIAL.**

Ambient temperature:  
with coil class F - 10°C + 60°C  
with coil class H - 10°C + 80°C



Gaskets	Temperature		Medium
S=VMQ (silicone)	+ 2°C	+100°C	Water



Pipe	Code	Max viscosity		Ø mm	Kv l/mn	Power (watt)	Pressure		
		cSt	°E				min bar	M.O.P.D. AC bar DC bar	
See connection types overleaf (A-B-D-I-L-R)	21K72KRS90-000	-	-	9	*	8	0	0,3	0,3
	22K72KRS90-000								
	23K72KRS90-000								
	24K72KRS90-000								
	25K72KRS90-000								
26K72KRS90-000									

\* FLOW RATE WITH HEAD OF 80 mm = 2,5 l/min.

**NSF CERTIFIED**



The "ODE" reserves the right to carry out technical and aesthetic modifications without prior notification

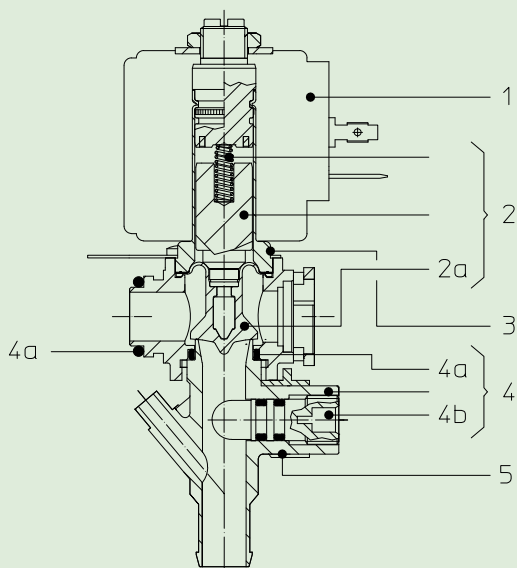
**MATERIALS:**

- Body** PSU (Polysulphone)
- Lower body** PSU (Polysulphone)
- Lower body clamping device** PA (Polyammide)
- Armature tube** Brass - UNI EN 12164 CW614N
- Fixed core** Stainless steel AISI series 400
- Plunger** Stainless steel AISI series 400
- Phase displacement ring** Copper - Cu 99,9%
- Spring** Stainless steel AISI series 300
- Bellow membrane** Standard: S = VMQ  
On request W = MFQ

**SPARE PARTS:**

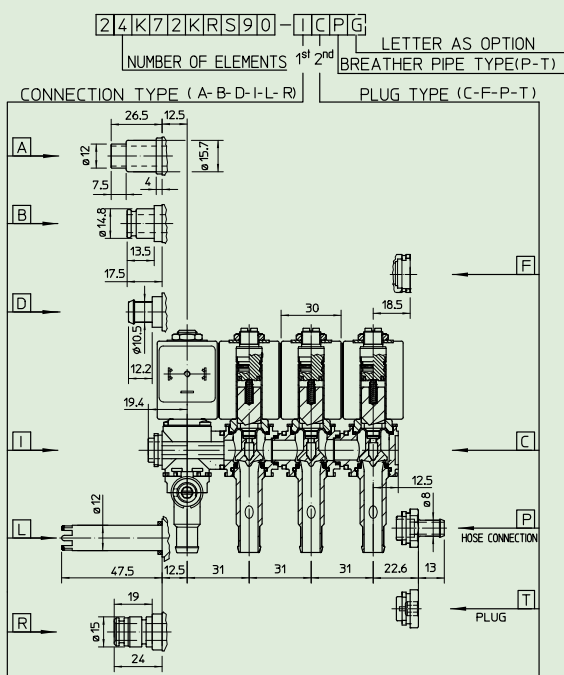
- 1. Coil:**  
See coils list
- 2. Complete plunger:**  
Cod. R452491/S
- 2a. Bellow membrane:**  
Code R452489/S
- 3. Complete armature tube:**  
Code R452197
- 4. Lower body assembly:**  
Code R452493
- 4a. Gasket O-Ring:**  
Code R990052/S
- 4b. Flow setting screw with O-Ring:**  
Code R452226
- 5. Lower body clamping device:**  
Code R452259

**KIT:**  
KR130KRS90-L3=2+3

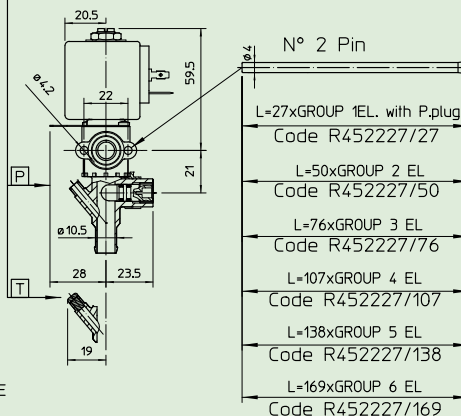


**DIMENSIONS:**

**SOLENOID VALVE CODING WITH ACCESSORIES**



- KEY :**
- A = Connection  $\varnothing 15.7 \times 22.5$
  - B = Connection  $\varnothing 15 \times 13.5$  with OR
  - C = S.V. body-closed
  - D = Hose connection  $\varnothing 10.5 \times 12.2$
  - F = S.V. body-open-female bayonet joint
  - G = Selflocking gasket (R451856) for connection type "A" only
  - I = Male bayonet joint
  - L = Connection  $\varnothing 12 \times 47.5$
  - P = Hose connection
  - R = Quick coupling joint  $\varnothing 15 \times 19$
  - T = Polysulphone plug for F joint
  - T = Silicone plug for breather pipe



- FOR LEFT INLET INDICATE THE LETTER CORRESPONDING TO CONNECTION TYPE IN THE FIRST BOX, AND TO PLUG TYPE IN THE SECOND BOX.

- FOR RIGHT INLET INDICATE THE LETTER CORRESPONDING TO CONNECTION TYPE IN THE SECOND BOX, AND TO PLUG TYPE IN THE FIRST BOX.

COIL TYPE	POWER ABSORPTION		
	W ---	Hold VA ~	Inrush VA ~
B	8	14,5	25



**Total separation solenoid valve  
2/2 way N.C. with flow regulation  
Direct acting - NSF Certified**

**21K72RRS90-000  
÷  
26K72RRS90-000**

**PRESENTATION:**

Bank S.V. for automatic drink dispensers.  
Minimum operational pressure is not required.  
The materials used and the tests carried out ensure maximum reliability and duration.

**USE:** Automatic drink dispensers

**PIPES** Please turn over (A-B-D-I-L-R)

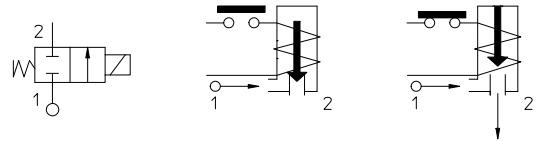
**COIL:** 12W ED 50% - Ø 10  
ICA 155°C (class F)

**MOULDING AND BOBBIN ARE MADE BY 100% VIRGIN MATERIAL.**

Ambient temperature - 10°C + 60°C



Gaskets	Temperature		Medium
S=VMQ (silicone)	+ 2°C	+100°C	Water



Pipe	Code	Max viscosity		Ø mm	Kv l/mn	Power (watt)	Pressure		
		cSt	°E				min bar	M.O.P.D. AC bar DC bar	
See connection types overleaf (A-B-D-I-L-R)	21K72RRS90-000	-	-	9	*	12 ED 50%	0	0,3	0,3
	22K72RRS90-000								
	23K72RRS90-000								
	24K72RRS90-000								
	25K72RRS90-000								
26K72RRS90-000									

\* FLOW RATE WITH HEAD OF 80 mm = 2,5 l/min.

**NSF CERTIFIED**



**Note**

Available on request and with minimum quantities.

The "ODE" reserves the right to carry out technical and aesthetic modifications without prior notification

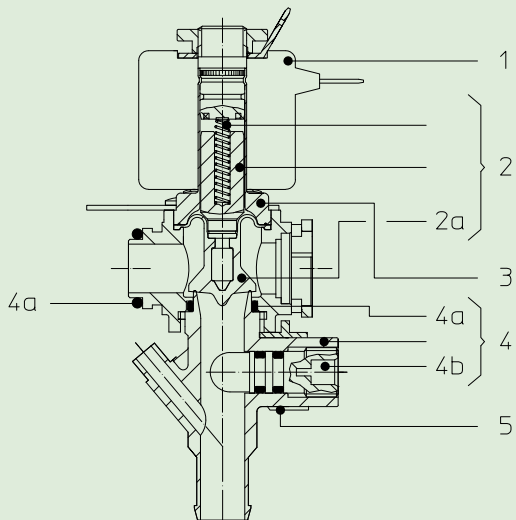


**MATERIALS:**

<b>Body</b>	PSU (Polysulphone)
<b>Lower body</b>	PSU (Polysulphone)
<b>Lower body clamping device</b>	PA (Polyamide)
<b>Armature tube</b>	Brass - UNI EN 12164 CW614N
<b>Fixed core</b>	Stainless steel AISI series 400
<b>Plunger</b>	Stainless steel AISI series 400
<b>Phase displacement ring</b>	Copper - Cu 99,9%
<b>Spring</b>	Stainless steel AISI series 300
<b>Bellow membrane</b>	Standard: S = VMQ On request W = MFQ

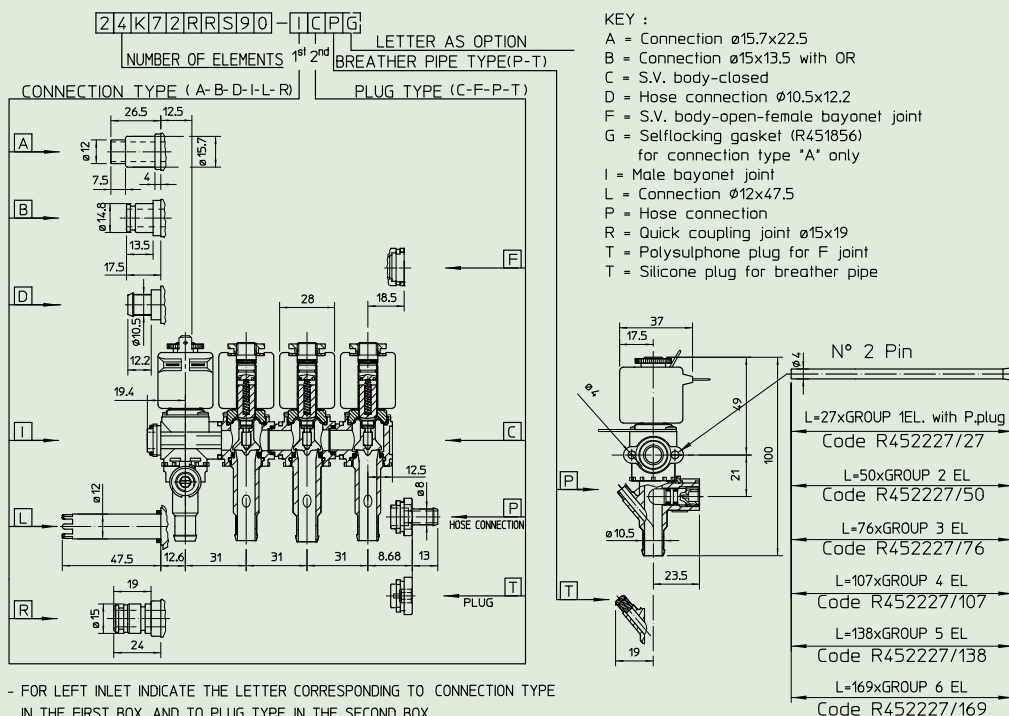
**SPARE PARTS:**

- |   |  |
|---|--|
| <b>1. Coil:</b><br>See coils list                 | <b>4b.Flow setting screw with O-Rings:</b><br>Code R452226 |
| <b>2. Complete plunger:</b><br>Cod. R452236/S     | <b>4c.Lower body clamping device:</b><br>Code R452259      |
| <b>2a.Bellow membrane:</b><br>Code R452224/S      | <b>KIT:</b><br>KR100RRS90-L2=2+3                           |
| <b>3. Complete armature tube:</b><br>Code R452241 |  |
| <b>4. Lower body assembly:</b><br>Code R452294    |  |
| <b>4a. Gasket O-Ring:</b><br>Code R990052/S       |  |



**DIMENSIONS:**

**SOLENOID VALVE CODING WITH ACCESSORIES**



COIL TYPE	POWER ABSORPTION		
	W ==	Hold VA ~	Inrush VA ~
I	12	22	30