



Solenoid valve 3/2 way N.C. Direct acting Explosion proof Ex mb II T 4

31A3PDV15
÷
31A2PDV30

PRESENTATION:

Direct acting S.V. for interception of fluids compatible with the construction materials.

Minimum operational pressure is not required.

The materials used and the tests carried out ensure maximum reliability and duration.

USE: Potentially explosive atmospheres

PIPES: G 1/8 - G 1/4

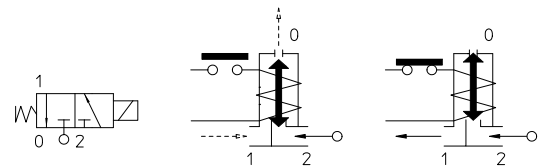
COIL: Series TNA - Ø 14,5
(For characteristic see catalogue page)

Max. allowable pressure (PS) 40 bar
Environment temperature - 20°C + 50°C
Temperature max. medium + 80°C



Special item-not standard

| Gaskets | Temperature | | Medium |
|--------------------------------|-------------|--------|---|
| V=FKM (fluoroelastomer) | - 10°C | + 80°C | Mineral oils (2°E), gasoline gas oil, fuel oils (7°E) |
| F=H-NBR (hydrogenated nitrile) | - 20°C | + 80°C | Air, inert gas, water R 134a, R 404a |



For seals other than FKM replace the letter "V" with the ones corresponding to the other seals. E.I. 31A2PDF15.

| Pipe ISO 228/1 | Code | Max viscosity | | Ø mm | Kv l/mn | Power (watt) | Pressure | | |
|-------------------|-----------|---------------|-----|---------|------------|--|------------|---------------------------|----|
| | | cSt | °E | | | | min bar | M.O.P.D. AC bar DC bar | |
| G 1/8 | 31A3PDV15 | 12 | ~ 2 | 1,5* | 1,2 | (See TNA coils catalogue page) | 0 | 15 | 15 |
| | 31A3PDV20 | 37 | ~ 5 | 2* | 2 | | | 10 | 10 |
| | 31A3PDV25 | 53 | ~ 7 | 2,5* | 3 | | | 6 | 6 |
| | 31A3PDV30 | | | 3* | 3,5 | | | 5 | 5 |
| G 1/4 | 31A2PDV15 | 12 | ~ 2 | 1,5* | 1,2 | | | 15 | 15 |
| | 31A2PDV20 | 37 | ~ 5 | 2* | 2 | | | 10 | 10 |
| | 31A2PDV25 | 53 | ~ 7 | 2,5* | 3 | | | 6 | 6 |
| | 31A2PDV30 | | | 3* | 3,5 | | | 5 | 5 |

(ATEX/ITA/09/063
According to Directive 94/9/CE ATEX)



Note

* 3rd way exhaust= Ø 3 mm

Available on request and with minimum quantities.

The "ODE" reserves the right to carry out technical and aesthetic modifications without prior notification.

MATERIALS:

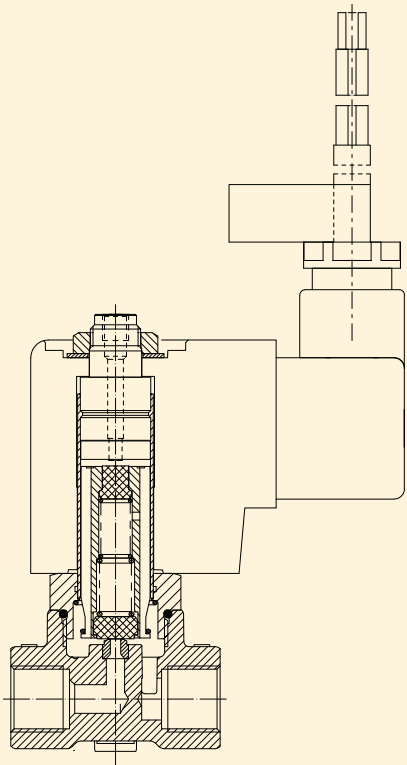
| | |
|--------------------------------|--|
| Body | Brass - UNI EN 12165 CW617N |
| Armature tube | Stainless steel AISI series 300 |
| Fixed core | Stainless steel AISI series 400 |
| Plunger | Stainless steel AISI series 400 |
| Phase displacement ring | Copper - Cu 99,9% |
| Spring | Stainless steel AISI series 300 |
| Seal | Standard: V=FKM On request: F=H-NBR |
| Orifice | Stainless steel AISI series 300 |

FEATURES:

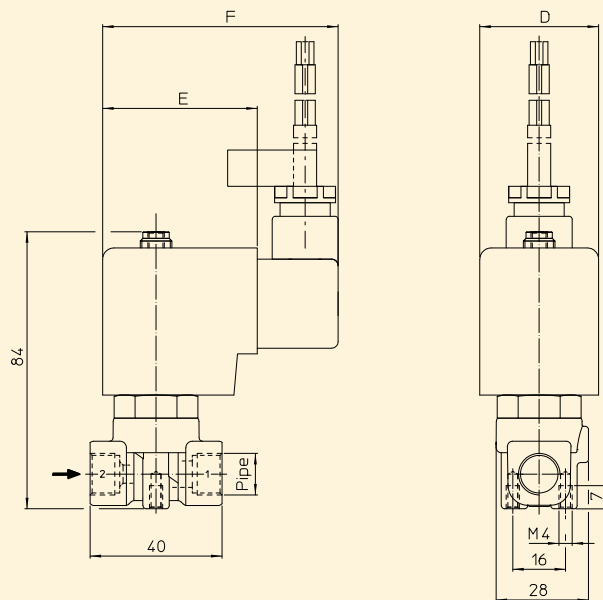
| | |
|--------------------------|----------------------------|
| Protection degree | IP 65 EN 60529 (DIN 40050) |
|--------------------------|----------------------------|

SPARE PARTS:

These articles cannot be supplied
as spare part according to Directive 94/9/CE ATEX



DIMENSIONS:



| Type | Pipe ISO 228/1 |
|---------|-------------------|
| 31A3PDV | G 1/8 |
| 31A2QDV | G 1/4 |

| COIL TYPE | DIMENSIONS | | |
|--------------|------------|---------|---------|
| | D mm | E mm | F mm |
| T | 36 | 47 | 81 |